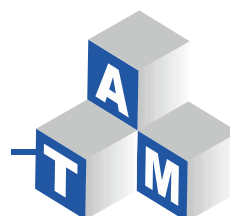


Katalog SAS 670 / 800 Ø 18 - 75 mm

Catalogue SAS 670 / 800 Ø 18 - 75 mm



SAS SYSTEMS

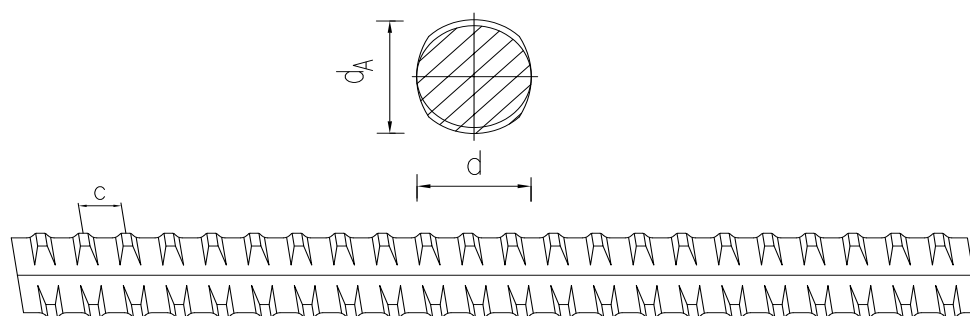


ADVANCED
TECHNOLOGIES
& MATERIALS

Pręty gwintowane SAS

SAS thread bars

SAS 670 / 800 Ø 18 - 75 mm



Pręty gwintowane SAS

gorączowalcowane, żebrowane - gwint prawoskrętny

SAS thread bar

hot rolled, ribbed - right hand thread

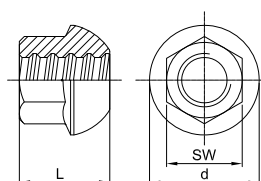
d	[mm]	18	22	25	28	30	35	43	50	57,5	63,5	75
max d _A	[mm]	21	25	28	32	34	40	48	55	63	70	82
c	[mm]	8	8	10	11	11	14	17	18	20	21	24
f _{yk} (f _{0,2k}) / f _{tk} / A ₁₀ ¹⁾		670 N/mm ² / 800 N/mm ² / ≥ 5 %										
F _{yk} (F _{0,2k})	[kN]	170	255	329	413	474	645	973	1315	1740	2122	2960
F _{tk}	[kN]	204	304	393	493	565	770	1162	1570	2077	2534	3535
A	[mm ²]	254	380	491	616	707	962	1452	1963	2597	3167	4418
G	[kg/m]	2,00	2,98	3,85	4,83	5,55	7,55	11,40	15,40	20,38	24,86	34,68

¹⁾ procentowe całkowite wydłużenie przy maksymalnej sile / percentage total elongation at maximum force

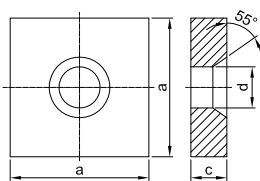
Podana masa jest wartością średnią. Wartość rzeczywista może się różnić z uwagi na tolerancję produkcji.
Weight specifications are average values. The actual values may deviate due to fabrication tolerances.

SAS SYSTEMS

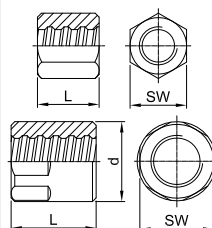
nakrętka sferyczna 55°
dome nut 55°



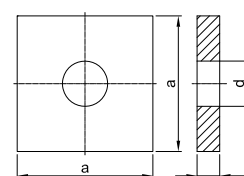
plyta oporowa stożkowa 55°
anchor plate cone 55°



nakrętka kotwiąca płaska
anchor nut flat



plyta oporowa płaska
anchor plate flat

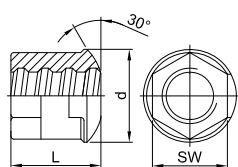


Ø [mm] SW x L x d [mm] [kg] a x c x d [mm] [kg] SW x L x d [mm] [kg] a x c x d [mm] [kg] a x c x d [mm] [kg]

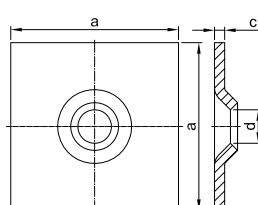
	TR 2001		TR 2011		TR 2002		TR 2138		TR 2139	
18	32 x 35 x 43	0,18	100 x 25 x 27	2,20	36 x 45	0,29	-	-	100 x 25 x 23	1,85
22	36 x 45 x 53	0,32	110 x 30 x 32	2,62	41 x 50	0,39	-	-	110 x 30 x 27	2,68
25	41 x 50 x 60	0,43	125 x 30 x 35	3,39	46 x 55	0,53	110 x 25 x 30	2,2	125 x 30 x 30	3,48
28	46 x 55 x 67	0,62	135 x 35 x 40	4,59	50 x 60	0,67	115 x 30 x 30	2,85	120 x 30 x 34	3,18
30	50 x 60 x 71	0,66	145 x 35 x 40	5,32	55 x 65	0,90	130 x 30 x 36	3,7	130 x 35 x 36	4,36
35	60 x 70 x 83	1,30	170 x 40 x 47	8,36	65 x 70	1,38	150 x 35 x 42	5,7	150 x 40 x 42	6,63
43	70 x 85 x 102	2,22	210 x 50 x 58	15,90	80 x 90	2,62	185 x 45 x 50	11,4	185 x 55 x 50	13,93
50	80 x 95 x 116	3,31	240 x 55 x 70	22,59	80 x 100 x 90	2,94	210 x 50 x 60	16,2	215 x 60 x 60	20,44
57,5	90 x 115 x 137	5,32	275 x 60 x 75	32,80	90 x 120 x 102	4,42	250 x 55 x 67	25	245 x 65 x 67	28,83
63,5	100 x 125 x 151	7,26	300 x 65 x 82	42,20	100 x 145 x 114	6,89	265 x 60 x 74	30,6	270 x 70 x 74	37,7
75	120 x 150 x 178	12,2	325 x 70 x 88	53,10	100 x 130 x 108	4,04	320 x 70 x 86	53	325 x 70 x 86	54,7

SAS SYSTEMS

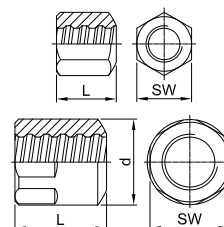
nakrętka sferyczna 30°
dome nut 30°



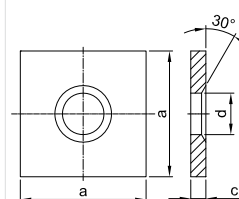
plyta oporowa sferyczna 30°
domed washer 30°



nakrętka stożkowa 30°
bull nose nut 30°



plyta oporowa stożkowa 30°
anchor plate cone 30°



Ø [mm] SW x L x d [mm] [kg] a x c x d [mm] [kg] SW x L x d [mm] [kg] a x c x d [mm] [kg]

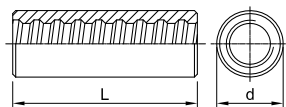
	TR 2944		TR 2132		TR 2963		TR 1928	
18	30 x 35 x 46	0,19	150 x 10 x 26	1,70	36 x 45	0,27	70 x 10 x 25	0,34
22	36 x 40 x 51	0,26	150 x 10 x 34	1,75	41 x 50	0,37	90 x 12 x 30	0,68
25	41 x 50 x 58	0,42	200 x 10 x 34	3,10	46 x 55	0,50	100 x 12 x 33	0,83
28	46 x 60 x 62	0,62	200 x 12 x 40	3,70	50 x 60	0,65	120 x 20 x 40	2,05
30	46 x 60 x 62	0,65	200 x 12 x 40	3,70	55 x 65	0,82	120 x 20 x 40	2,05
35	-	-	-	-	65 x 70	1,33	150 x 30 x 47	4,80
43	-	-	-	-	80 x 90	2,50	190 x 45 x 58	11,70
50	-	-	-	-	90 x 100 x 90	2,81	210 x 50 x 60	16,15
57,5	-	-	-	-	90 x 120 x 102	4,40	245 x 50 x 70	21,90
63,5	-	-	-	-	100 x 145 x 114	6,88	280 x 60 x 78	33,60
75	-	-	-	-	100 x 130 x 108	3,93	325 x 70 x 88	54,50

Akcesoria

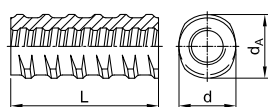
accessories

SAS SYSTEMS

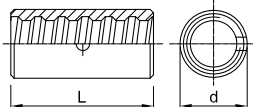
łącznik zwykły
coupler standard



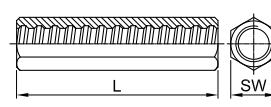
łącznik gwintowany
thread bar coupler



łącznik kontaktowy
contact coupler



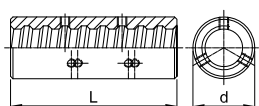
łącznik sześciokątny długi
hexagonal coupler long



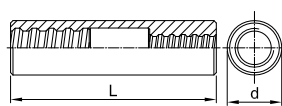
Ø [mm]	d x L [mm]	[kg]	d x d _A x L [mm]	[kg]	d x L [mm]	[kg]	SW x L [mm]	[kg]
TR 3003			TR 3087		TR 3006		TR 3010	
18	36 x 100	0,56	32 x 37 x 100	0,44	27 x 70	0,16	30 x 110	0,42
22	40 x 110	0,71	36 x 42 x 110	0,57	32 x 75	0,25	36 x 120	0,65
25	45 x 120	0,95	47 x 53 x 120	1,18	40 x 80	0,47	41 x 135	0,95
28	50 x 140	1,37	47 x 53 x 140	1,23	45 x 90	0,52	46 x 145	1,29
30	55 x 150	1,83	57 x 64 x 150	2,19	45 x 90	0,61	50 x 155	1,65
35	65 x 170	2,94	65 x 72 x 170	3,11	50 x 120	0,82	60 x 175	2,80
43	80 x 200	5,43	75 x 82 x 200	4,77	65 x 160	2,08	75 x 220	5,61
50	90 x 210	6,92	-	-	70 x 170	2,23	-	-
57,5	102 x 250	10,31	-	-	80 x 180	3,46	-	-
63,5	114 x 300	15,89	-	-	90 x 200	4,24	-	-
75	108 x 260	8,98	-	-	102 x 230	5,85	-	-

SAS SYSTEMS

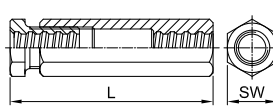
łącznik z kompletem śrub
coupler with set screws



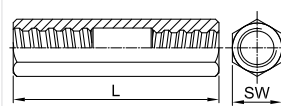
łącznik redukcyjny
reducing coupler



łącznik napinający
turnbuckle



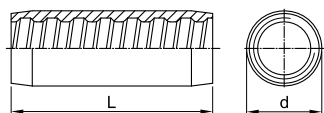
TR/T łącznik wymienny
TR/T stressing coupler



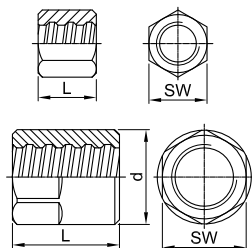
Ø [mm]	d x L [mm]	[kg]	d x L [mm]	[kg]	SW x L [mm]	[kg]	TR/T x SW x L [mm]	[kg]
TR 3020		TR 3102		TR 3105		TR/T 3106		
18	36 x 100	0,56	-	-	41 x 175	1,51	-	-
22	40 x 110	0,71	40 x 145	1,00	46 x 190	1,72	-	-
25	45 x 120	0,94	45 x 160	1,40	50 x 205	1,83	-	-
28	50 x 140	1,36	50 x 180	1,79	60 x 225	1,90	28/32 x 50 x 230	2,41
30	55 x 150	1,84	55 x 195	2,50	65 x 250	3,30	-	-
35	65 x 170	2,95	60 x 215	2,97	80 x 270	4,78	35/40 x 65 x 280	4,84
43	80 x 200	5,42	80 x 250	6,74	90 x 325	6,08	43/50 x 80 x 330	8,29
50	90 x 210	6,82	85 x 275	7,82	100 x 345	17,06	-	-
57,5	102 x 250	10,00	102 x 290	10,00	100 x 390	21,75	57,5/63,5 x 90 x 335	12,4
63,5	114 x 300	15,59	108 x 330	12,38	100 x 405	23,42	-	-
75	108 x 260	8,68	108 x 335	12,42	110 x 405	21,00	-	-

SAS SYSTEMS

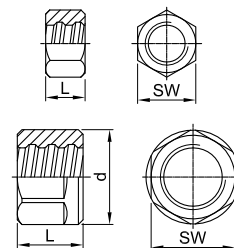
łącznik fazowany
coupler tempered



nakrętka kontrolująca długość
lock nut long



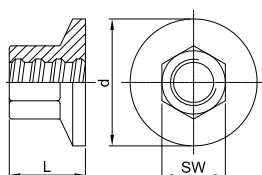
nakrętka kontrolująca krótkość
lock nut short



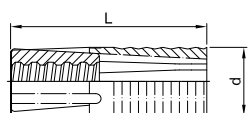
Ø [mm]	d x L [mm]	[kg]	SW x L x d [mm]	[kg]	SW x L x d [mm]	[kg]
TR 3927		TR 2003		TR 2040		
18	-	-	30 x 40	0,16	30 x 22	0,10
22	36 x 90	0,40	36 x 45	0,25	36 x 22	0,12
25	38 x 100	0,45	41 x 50	0,34	41 x 22	0,15
28	42 x 120	0,65	46 x 55	0,50	46 x 30	0,26
30	50 x 130	1,18	50 x 60	0,67	50 x 30	0,31
35	56 x 150	1,47	55 x 65	0,78	55 x 40	0,47
43	65 x 170	2,02	70 x 80	1,60	70 x 50	0,99
50	75 x 180	2,76	80 x 90	2,27	80 x 50	1,26
57,5	85 x 220	5,00	90 x 100 x 102	3,56	90 x 60 x 102	1,93
63,5	95 x 240	8,30	100 x 115 x 114	5,26	100 x 70 x 114	3,03
75	-	-	100 x 120 x 108	3,49	100 x 80 x 108	2,28

SAS SYSTEMS

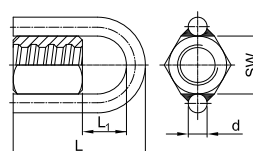
głowiczka kotwiąca
anchor piece



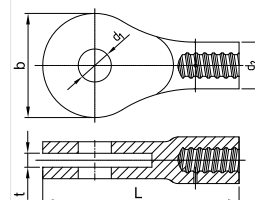
kotwa rozprężna
expansion shell



nakrętka pierścieniowa
ring nut



zakotwienie widelcowe
fork piece



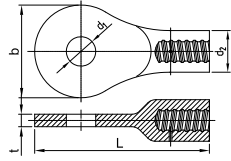
Ø [mm]	SW x L x d [mm]	[kg]	d x L [mm]	[kg]	SW x L x d x L ₁ [mm]	[kg]	t x b x L x d ₁ x d ₂	[kg]
TR 2073		TR 2136		TR 2927		TR 2090		
18	32 x 35 x 55	0,30	39 x 110	0,43	36 x 115 x 16 x 54	0,68	-	
22	36 x 45 x 65	0,41	49 x 120	0,67	41 x 125 x 16 x 59	0,81	-	
25	41 x 50 x 75	0,60	49 x 120	0,67	46 x 145 x 16 x 74	1,02	-	
28	46 x 55 x 85	0,82	59 x 150	1,01	50 x 155 x 16 x 79	1,19	-	
30	50 x 60 x 90	1,00	59 x 150	1,01	55 x 165 x 16 x 84	1,46	-	
35	60 x 70 x 105	1,54	-	-	65 x 184 x 20 x 94	2,36	27 x 167 x 315 x 56 x 75	7,40
43	70 x 85 x 130	2,51	-	-	-	-	29 x 197 x 384 x 63 x 92	~12,80
50	80 x 100 x 150	4,38	-	-	-	-	na zamówienie / on request	
57,5	90 x 115 x 175	6,67	-	-	-	-	42 x 248 x 453,5 x 88 x 96	20,40
63,5	100 x 125 x 190	8,57	-	-	-	-	42 x 298 x 553 x 98 x 114	34,50
75	120 x 150 x 230	14,73	-	-	-	-	54 x 328 x 627 x 108 x 116	44,40

Akcesoria

accessories

SAS SYSTEMS

zakotwienie oczkowe
eye piece

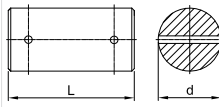


Ø [mm]

$a \times L \times t \times d_1 \times d_2$

[kg]

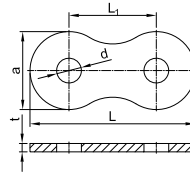
sworzeń zakotwienia
oczkowego
bolt eye piece



$d \times L$ [mm]

[kg]

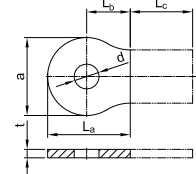
łącznik zakotwienia oczkowego
strap connection eye piece



$a \times t \times d \times d_1 \times L \times L_1$ [mm]

[kg]

plyta spawana zakotwienia
oczkowego
welding plate eye piece

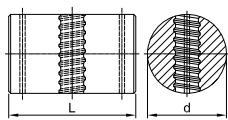


$a \times b \times t \times d_1 \times L_a \times L_b \times L_c$ [mm]

	TR 2080		TR 2081		TR 3080		TR 3081	
18	-	-	-	-	-	-	-	-
22	-	-	-	-	-	-	-	-
25	-	-	-	-	-	-	-	-
28	-	-	-	-	-	-	-	-
30	-	-	-	-	-	-	-	-
35	167 x 315 x 22,5 x 53 x 75	7,4	50 x 100	1,5	167 x 18 x 114 x 53 x 354 x 187	7,0	167 x 114 x 18 x 53 x 177 x 93,5 x L _c	
43	197 x 384 x 25 x 63 x 92	12,8	60 x 110	2,4	197 x 20 x 134 x 63 x 414 x 217	9,6	197 x 134 x 20 x 63 x 207 x 108,5 x L _c	
50	a solicitud / on request							
57,5	248 x 453,5 x 38 x 88 x 96	20,4	85 x 145	6,4	248 x 30 x 160 x 88 x 526 x 278	21,9	248 x 160 x 30 x 88 x 263 x 139 x L _c	
63,5	298 x 553 x 38 x 98 x 114	34,5	95 x 145	8,1	298 x 30 x 200 x 98 x 626 x 328	31,8	298 x 200 x 30 x 98 x 313 x 164 x L _c	
75	328 x 587 x 50 x 108 x 116	44,4	105 x 165	11,2	328 x 35 x 220 x 108 x 691 x 363	45,8	328 x 220 x 35 x 108 x 345,5 x 181,5 x L _c	

SAS SYSTEMS

nakrętka
przytączeniowa
joint nut

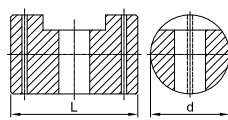


Ø [mm]

$d \times L$ [mm]

[kg]

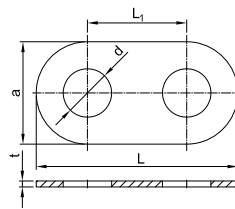
śruba przytączeniowa
joint bolt



$d \times L$ [mm]

[kg]

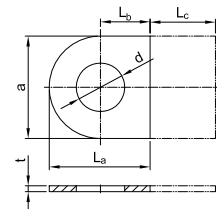
łącznik śruby i nakrętki
przytączeniowej
strap connection joint bolt & nut



$a \times t \times d_1 \times L \times L_1$ [mm]

[kg]

plyta spawana śruby i nakrętki
przytączeniowej
welding plate joint bolt & nut



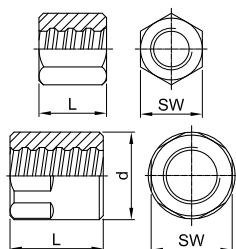
$a \times t \times d_1 \times L_a \times L_b \times L_c$ [mm]

[kg]

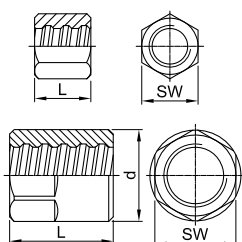
	TR 2020		TR 2021		TR 2022		TR 2023	
18	-	-	-	-	-	-	-	-
22	-	-	-	-	-	-	-	-
25	-	-	-	-	-	-	-	-
28	-	-	-	-	-	-	-	-
30	-	-	-	-	-	-	-	-
35	120 x 193	16,0	120 x 193	14,6	260 x 15 x 123 x 512 x 252	11,0	260 x 15 x 123 x 256 x 126 x L _c	
43	140 x 212	23,8	140 x 212	21,2	320 x 15 x 145 x 626 x 306	16,6	320 x 15 x 145 x 313 x 153 x L _c	
50	a solicitud / on request							
57,5	150 x 222	27,0	150 x 222	24,6	420 x 20 x 155 x 780 x 360	40,2	420 x 20 x 155 x 390 x 180 x L _c	
63,5	190 x 265	53,4	190 x 265	50,2	460 x 25 x 195 x 894 x 434	59,6	460 x 25 x 195 x 447 x 217 x L _c	
75	190 x 279	55,0	190 x 279	52,0	470 x 35 x 195 x 912 x 442	88,4	470 x 35 x 195 x 456 x 221 x L _c	

SAS SYSTEMS

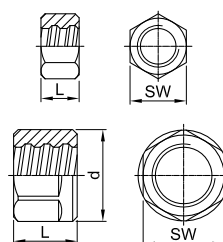
nakrętka kotwiąca EP płaska
anchor nut EP flat



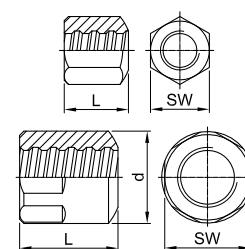
nakrętka kontrująca EP długa
lock nut EP long



nakrętka kontrująca EP krótka
lock nut EP short



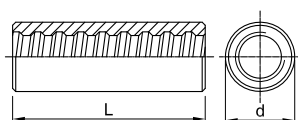
nakrętka stożkowa EP 30°
bull nose EP 30°



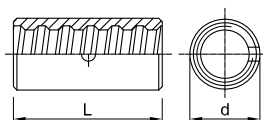
Ø [mm]	SW x L x d [mm]	[kg]	SW x L x d [mm]	[kg]	SW x L x d [mm]	[kg]	SW x L x d [mm]	[kg]
	TR 2002 EP		TR 2003 EP		TR 2040 EP		TR 2963 EP	
18	36 x 55	0,40	30 x 50	0,20	30 x 30	0,11	36 x 55	0,38
22	41 x 60	0,45	36 x 60	0,33	36 x 30	0,16	41 x 60	0,43
25	46 x 70	0,73	41 x 65	0,48	41 x 30	0,21	46 x 70	0,64
28	50 x 75	0,82	46 x 70	0,64	46 x 40	0,34	50 x 75	0,67
30	55 x 80	1,14	50 x 75	0,84	50 x 40	0,41	55 x 80	0,98
35	65 x 85	1,75	55 x 80	1,00	55 x 65	0,75	65 x 85	1,70
43	80 x 105	3,30	70 x 100	2,12	70 x 80	1,69	80 x 105	3,20
50	80 X 115 X 90	3,43	80 X 110	2,78	80 X 80	2,02	90 X 115	2,94
57,5	90 x 140 x 102	5,60	90 x 120 x 102	4,70	90 x 100 x 102	3,80	90 x 140 x 102	5,50
63,5	100 x 170 x 114	8,60	100 x 140 x 108	6,20	100 x 115 x 108	5,00	100 x 170 x 114	8,50
75	100 x 150 x 108	4,67	100 x 140 x 108	4,07	100 x 90 x 108	2,67	100 x 150 x 108	4,60

SAS SYSTEMS

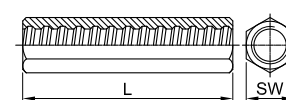
łącznik zwykły EP
coupler EP standard



łącznik kontaktowy EP
contact coupler EP



łącznik sześciokątny EP długi
hexagonal coupler EP long



Ø [mm]	Ø x L [mm]	[kg]	Ø x L [mm]	[kg]	SW x L [mm]	[kg]
	TR 3003 EP		TR 3006 EP		TR 3010 EP	
18	36 x 115	0,64	27 x 70	0,16	30 x 130	0,50
22	40 x 125	0,78	32 x 75	0,25	36 x 140	0,76
25	45 x 150	1,24	36 x 80	0,47	41 x 165	1,16
28	50 x 160	1,56	45 x 90	0,52	46 x 175	1,56
30	55 x 165	2,02	45 x 90	0,61	50 x 185	1,97
35	60 x 190	2,67	50 x 120	0,82	60 x 205	3,28
43	80 x 225	6,16	65 x 160	2,08	75 x 250	6,38
50	90 X 235	7,72	70 X 170	2,21	-	-
57,5	102 x 275	11,14	80 x 180	3,46	-	-
63,5	108 x 285	11,90	90 x 200	4,24	-	-
75	108 x 290	9,70	102 x 230	5,85	-	-

granica plastyczności / wytrzymałość na rozciąganie
yield stress / ultimate stress
obszar stosowania / areas of application

nom.- ϕ
nom.- ϕ

obciążenie
uplastyczniające
yield load

obciążenie
graniczne
ultimate load

pole przekroju
cross section area

masa
weight

wydłużenie
elongation

[mm]

[kN]

[kN]



[mm²]


[m/t]


[kg/m]


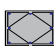
A_{gt} [%]



A₁₀ [%]

SAS 550 / 620								
	systemy zbrojenia / reinforcing systems	12	62	70	113	1123,6	0,89	
		14	85	95	154	826,4	1,21	
		16	110	125	201	632,9	1,58	
		20	175	195	314	404,9	2,47	
		25	270	305	491	259,7	3,85	
		28	340	380	616	207,0	4,83	6
	systemy geotechniczne / geotechnical systems	32	440	500	804	158,5	6,31	
		40	690	780	1260	101,3	9,87	
		50	1080	1215	1960	64,9	15,40	
		SAS 555 / 700	57,5	1441	1818	2597	49,1	20,38
SAS 555 / 700	63,5	1760	2215	3167	40,2	24,86	5	
SAS 500 / 550	75	2209	2430	4418	28,8	34,68	5	nowy


SAS 450 / 700								
	górnictwo / mining	16	93	145	207	617,3	1,62	(A ₅) 15
		25	220	345	491	259,7	3,85	(A ₅) 20

SAS 650 / 800								
	górnictwo / mining	22	247	304	380	335,6	2,98	
		25	319	393	491	259,7	3,85	
		28	400	493	616	207,0	4,83	
		30	460	565	707	180,2	5,55	(A ₅) 18

SAS 670 / 800								
	systemy geotechniczne / geotechnical systems	18	170	204	254	500,0	2,00	
		22	255	304	380	335,6	2,98	
		25	329	393	491	259,7	3,85	
		28	413	493	616	207,0	4,83	
		30	474	565	707	180,2	5,55	5
	górnictwo i tunelowanie / tunneling & mining	35	645	770	962	132,5	7,55	
		43	973	1162	1452	87,7	11,40	
		50	1315	1570	1963	64,9	15,40	
	zbrojenie wysokiej wytrzymałości / high-strength reinforcement	57,5	1740	2077	2597	49,1	20,38	
		63,5	2122	2534	3167	40,2	24,86	
		75	2960	3535	4418	28,8	34,68	

SAS 950 / 1050									
	systemy sprężania / post-tensioning systems	18	230	255	241	510,2	1,96		
		26,5	525	580	551	223,2	4,48		
		32	760	845	804	153,1	6,53		
	systemy geotechniczne / geotechnical systems	36	960	1070	1020	120,9	8,27	5	7
		40	1190	1320	1257	97,9	10,21		
		47	1650	1820	1735	70,9	14,10		

SAS 835 / 1035									
	systemy geotechniczne / geotechnical systems	57	2155	2671	2581	47,7	20,95		
		65	2780	3447	3331	36,9	27,10	4	7
		75	3690	4572	4418	27,9	35,90		

SAS 900 / 1100 FA						spawalne / weldable			
	ściągę szalunkowe / formwork ties	15	159	195	177	694,4	1,44		
		20	283	345	314	390,6	2,56	3	7
		26,5	495	606	551	223,2	4,48	2	7

SAS 900 / 1050 FC									
	ściągę szalunkowe / formwork ties	15	159	186	177	694,4	1,44	nowy	
		20	283	330	314	390,6	2,56	7	nowy
		SAS 950 / 1050 E	26,5	525	580	551	223,2	4,48	5

SAS 750 / 875 FS - zimnowalcowane / cold rolled						spawalne / weldable			
	Ściągę szalunkowe / formwork ties	12,5	90	120	132,5	961,5	1,04		
		15	142	165	189	675,7	1,48	2	5,5
		20	245	285	326	390,6	2,56		

dostępne akcesoria dla wszystkich średnic i zastosowań / accessories for all dimensions and applications available